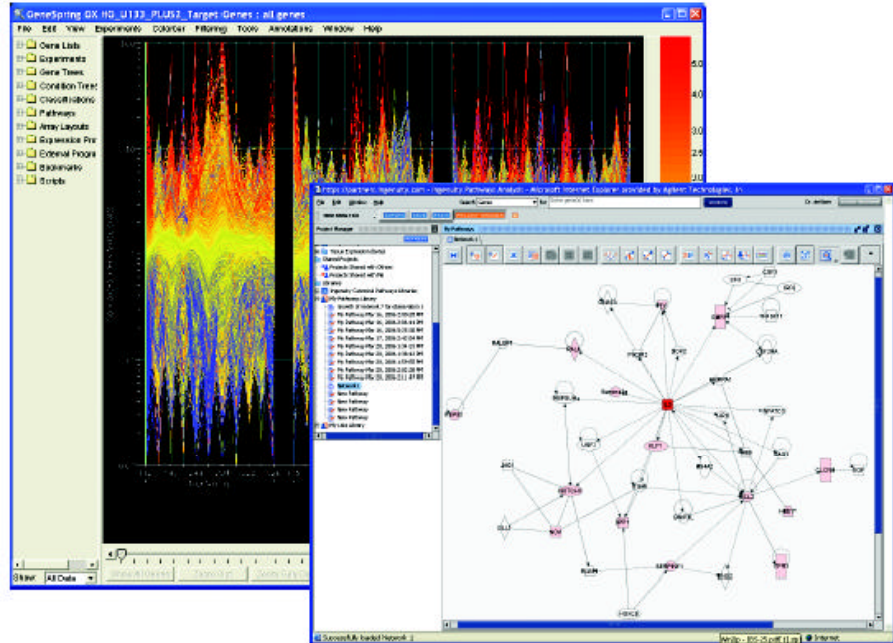




Integration Module for Ingenuity Pathway Analysis and GeneSpring GX

BENEFITS

- ⇒ Combines the analytical power of GeneSpring with the Biology of IPA.
- ⇒ Allows data to be analyzed using powerful, yet easy to use Analysis tools in GeneSpring, which can then be further analyzed in IPA to infer the biology.
- ⇒ The integration allows seamless interoperability between the two systems that allows researchers to iteratively analyze their data with minimal effort.



Now send an experiment from GeneSpring GX to IPA and perform data analysis.

INTRODUCTION

The GeneSpring GX – Ingenuity IPA integration module enable users of Agilent technologies' GeneSpring GX and Ingenuity IPA to exchange information between the two systems. Users of GeneSpring GX will be able to send Gene Lists and Experiment information to IPA. Once in IPA, researchers can perform network analyses, view relevant canonical pathways, create graphical and interactive diagrams, and utilize the search function to obtain information on genes or proteins of interest, as well as add proprietary information and interactions or pathways. The list of genes can be sent back to GeneSpring GX, allowing further iterative analysis of those genes.

GeneSpring GX users can obtain more information about an individual gene by following a hyperlink to visualize the selected gene in IPA GeneView.

Experimental data, such as p-values and expression values, can be sent with the genes to IPA. Researchers can then create customized pathways for targets, biomarkers, processes, and diseases of interest.

By combining rigorous expression analysis with network and pathways analysis, researchers will be able to develop a more complete biological understanding of their data.

CONTACT

AGILENT
+1 (877) 424-4536 phone
Contact_Us@agilent.com

INGENUITY SYSTEMS
+1 (650) 381.5111 phone
sales@ingenuity.com